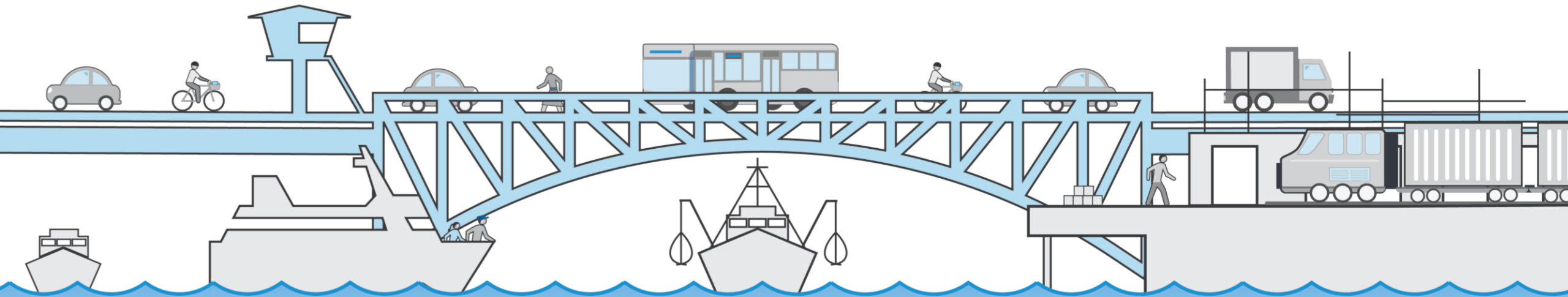


Ballard-Interbay Regional Transportation System

Community Meeting

Magnolia United Church of Christ



SDOT mission, vision, and core values

Mission:

To deliver a transportation system that provides safe and affordable access to places and opportunities

Vision:

Seattle is a thriving, equitable community powered by dependable transportation

Committed to 6 core values:

- Equity
- Safety
- Mobility
- Sustainability
- Livability
- Excellence

Presentation overview

- I. BIRT purpose
- II. Project partners
- III. Study area and context
- IV. Scope and outcomes
- V. Project schedule
- VI. Outreach strategy



Ballard-Interbay Regional Transportation System (BIRT)

The Washington State Legislature asked SDOT to develop a report on how to improve travel for people and goods in Ballard-Interbay.



Photo : Neil Hodges, Flickr

2019 Washington State legislative language

ESHB 1160 – Section 311(18)(b)

“Funding in this subsection is provided solely for the city of Seattle to develop a plan and report for the Ballard-Interbay Regional Transportation System project to **improve mobility for people and freight**. The plan must be developed in coordination and partnership with entities including but not limited to the city of Seattle, King county, the Port of Seattle, Sound Transit, the Washington state military department for the Seattle armory, and the Washington State Department of Transportation.

The plan must **examine replacement of the Ballard Bridge and the Magnolia Bridge**, which was damaged in the 2001 Nisqually earthquake. The city must provide a report on the plan that includes **recommendations to the Seattle city council, King county council, and the transportation committees of the legislature by November 1, 2020**. The report must include recommendations on how to **maintain the current and future capacities** of the Magnolia and Ballard bridges, an overview and analysis of all plans between 2010 and 2020 that examine how to replace the Magnolia bridge, and recommendations on a **timeline for constructing new Magnolia and Ballard bridges**.”

Project partners

An Interagency Team will guide the project.



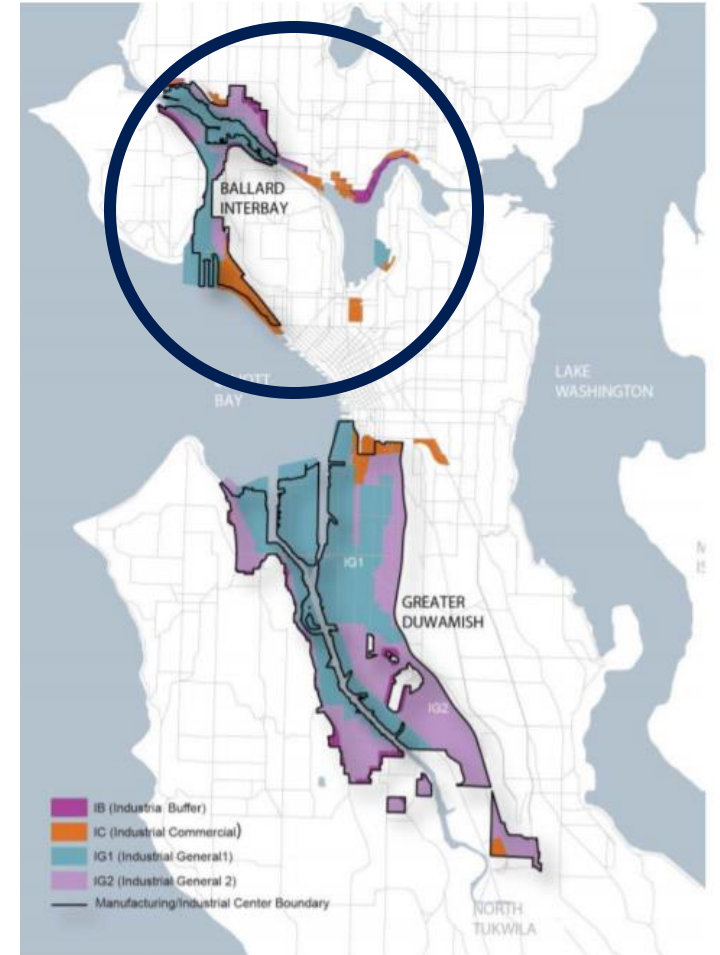
Project context

- Ballard-Interbay is home to a growing number of residents and jobs
- Seattle's Manufacturing and Industrial Centers (MICs) are experiencing economic growth and development
- Existing infrastructure requires investments to accommodate current and future growth
- Maintaining efficient movement of people and goods is a priority



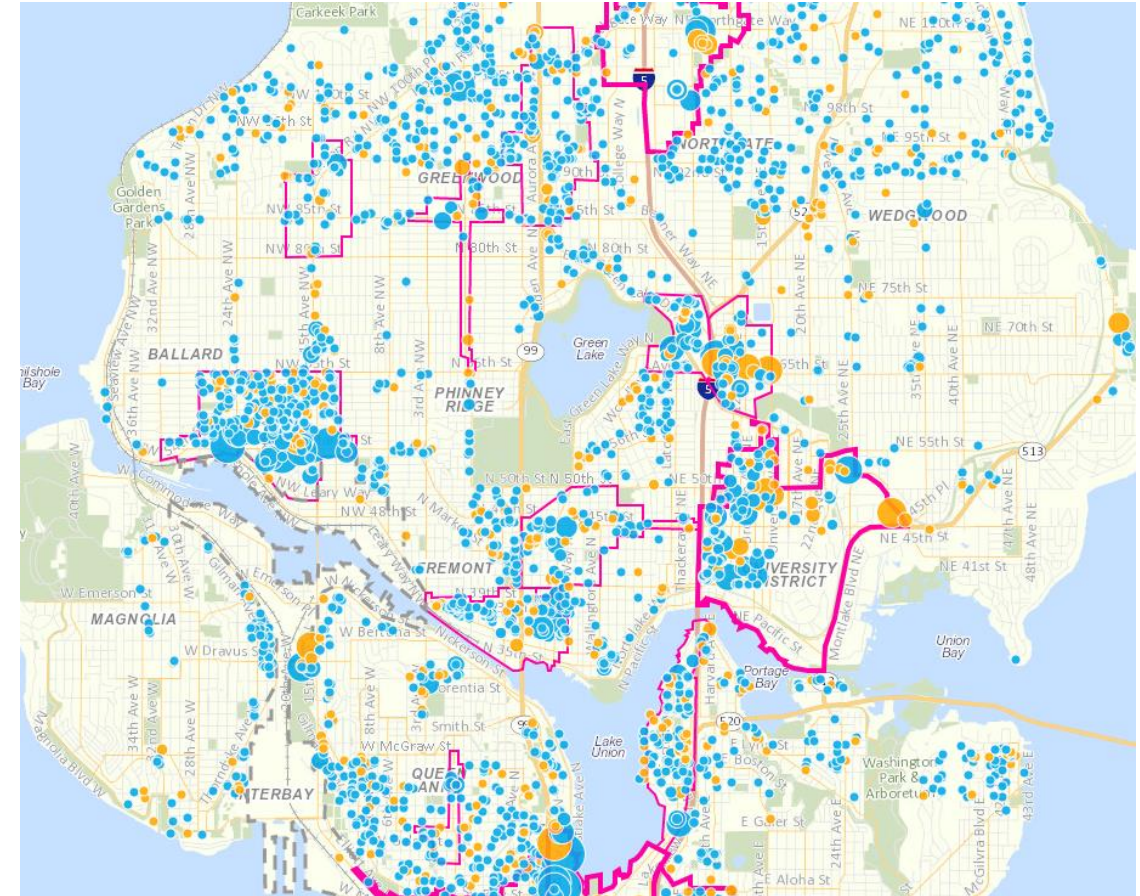
Ballard-Interbay-Northend Manufacturing and Industrial Center (BINMIC)

- Designated in 1994
- Approximately 971 acres
- Home to a diverse mix of businesses, working waterfront, wharfs, shipyards, and rail yards
- Smith Cove Cruise Terminal @ Pier 91
- BINMIC ensures adequate and accessible industrial land for a diverse employment base
- Contributes to Seattle's high-wage regional jobs



Growing neighborhoods

- The BIMNIC's surrounding neighborhoods are growing—particularly in areas with mixed housing
- Ballard and Lower Queen Anne have experienced significant population growth since 2000
- Dense housing is zoned adjacent to the BIRT project area



*New residential buildings (blue) and permits (orange)
2018 City of Seattle Data Portal*

Project coordination

- **Magnolia Bridge Planning Study and Ballard Bridge Planning Study** (2019/2020)
- **Interbay "Armory" Project** (November 2019)
- **Mayor's Industrial and Maritime Strategy** (Spring 2020)
- **Planning phase for ST3 Ballard to Downtown** (2022)
- **Redevelopment of Port of Seattle's Terminal 91** (site investigation underway)



Armory site



Cruise Terminal at Pier 91

Assessing bridge replacement

$\pi_1 - 15y$
 $\Delta x = \frac{3}{1}x$ New Bridge

$\int_a^b f(x) dx$ SR



$f(x) = \text{DET-RATE}$
 $\Delta x = ?$
~~MM & STATE~~ MM & STATE RATE
 MM & STATE

Mayor's Industrial and Maritime Strategy

Project goals:

- Strengthen and grow Seattle's industrial and maritime sectors
- Promote equitable access to living-wage jobs
- Improve the movement of people and goods
- Align with key climate and environmental goals
- Protect industrial jobs while addressing emerging opportunities



Photo: Port of Seattle

New light rail investments

ST3 West Seattle to Ballard Link Extensions

Timeline and milestones:

- Voter approval (2016)
- Planning, 2017-2022
- Design, 2022-2026*
- Construction, 2025-2035*
- Start of service Ballard Extension (2035)*



Technical scope elements

Review Existing Plans and Previous Studies

- Summarize findings and document guiding assumptions



Forecast and Assess Multimodal Integration

- Forecast future conditions
- Assess traffic, freight, and multimodal strategies



Analyze Impacts & Benefits of Bridge & System

- Conduct social and economic cost/benefits analysis



Bridge Replacement Timeline & Funding Strategy

- Develop timeline and funding approach for replacement of bridges

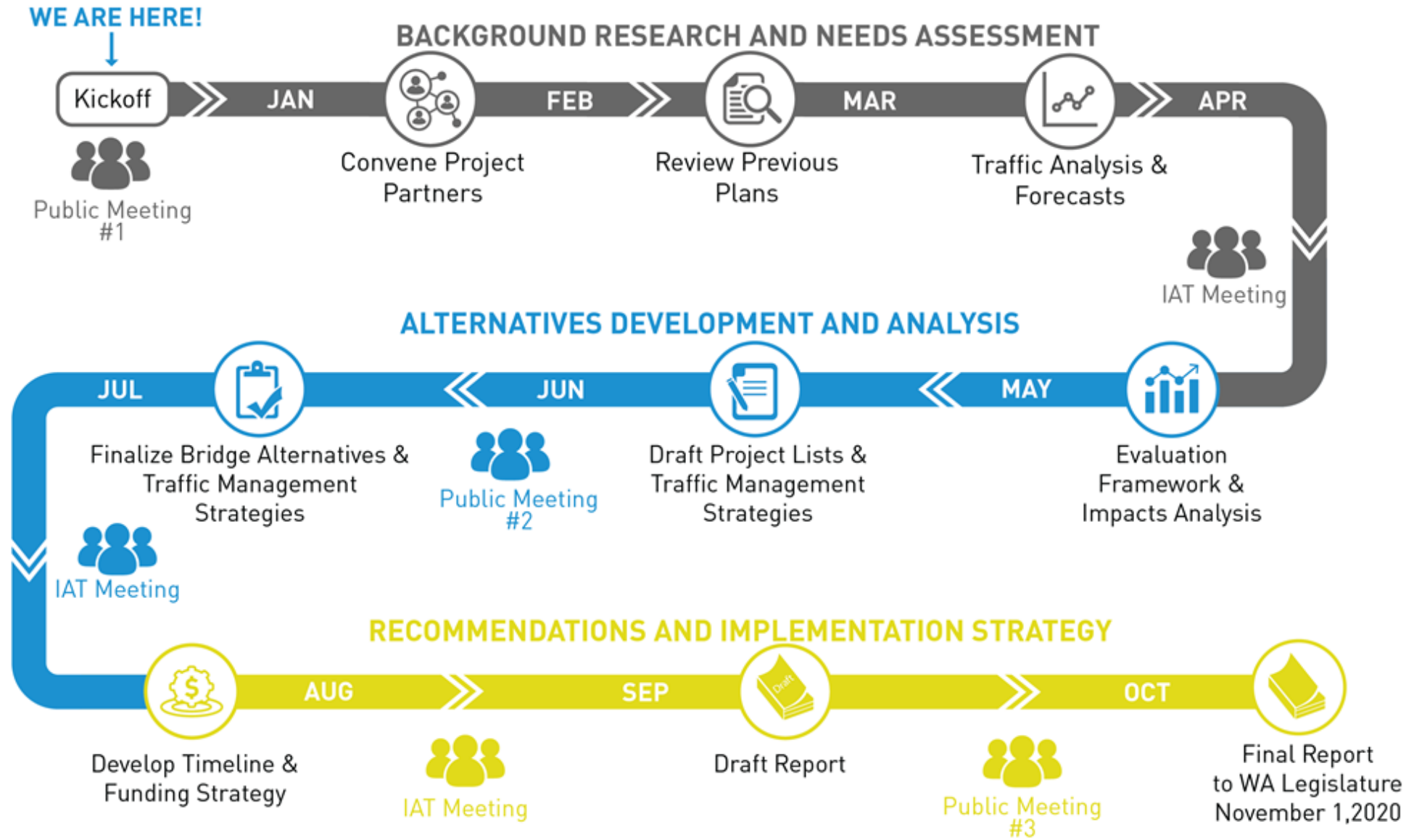


Report to WA Legislature

- Draft in September, submit November 1, 2020



Project timeline



Public engagement and input

- Community kickoff meetings
- Public Information Plan and Racial Equity Approach
- Project website and listserv: www.seattle.gov/transportation/birt
- Public meetings (Summer and Fall)
- Public welcome to attend key Interagency Team Meetings
- Invite comment from City of Seattle Boards and Commissions



Immediate next steps

- **January 2020:** Convene partner agencies, begin review of existing plans, and coordinate with study stakeholders
- **February 2020:** Begin technical work and refine project elements
- **March 2020:** Expand key stakeholder outreach and initiate traffic analysis and forecasting



Photo: Marinas.com

Stay involved!

Ballard-Interbay Regional Transportation Study

Travel for People and Goods



Join the project listserv for updates and notices:
seattle.gov/transportation/birt



Seattle
Department of
Transportation



Questions?

BallardInterbay@seattle.gov

www.seattle.gov/transportation/birt

diane.wiatr@seattle.gov

